



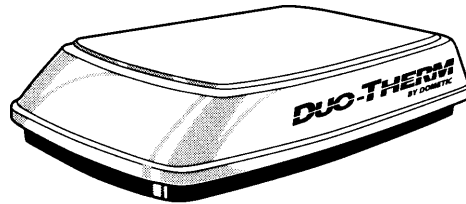
**WHEN ORDERING SPARE PARTS, ALWAYS STATE:**  
MODEL NO. - PRODUCT NO. - QUANTITY -  
PART NUMBER - DESCRIPTION  
**FOR ELECTRIC DETAILS ALSO:**  
VOLTAGE - WATTAGE

# MODEL 630035.321 Roof-Top Heat Pump used with Air Distribution Box Kit

**USA**  
SERVICE OFFICE  
The Dometic Corp.  
509 So. Poplar St.  
LaGrange, IN 46761  
219-463-4858

**CANADA**  
Dometic Dist.  
866 Langs Dr.  
Cambridge, Ontario  
CANADA N3H 2N7  
519-653-4390

**For Service Center  
Assistance Call:**  
800-544-4881



## PARTS LIST

**MODEL**  
**630035.321**  
**Product No. 991721743**  
**Suffix C & D**

NOTES:

---

---

---

---

---

---

---

---

---

---

---

---

---

---

---

---

---

---

---

---

---

---

---

---

## ALPHABETICAL INDEX

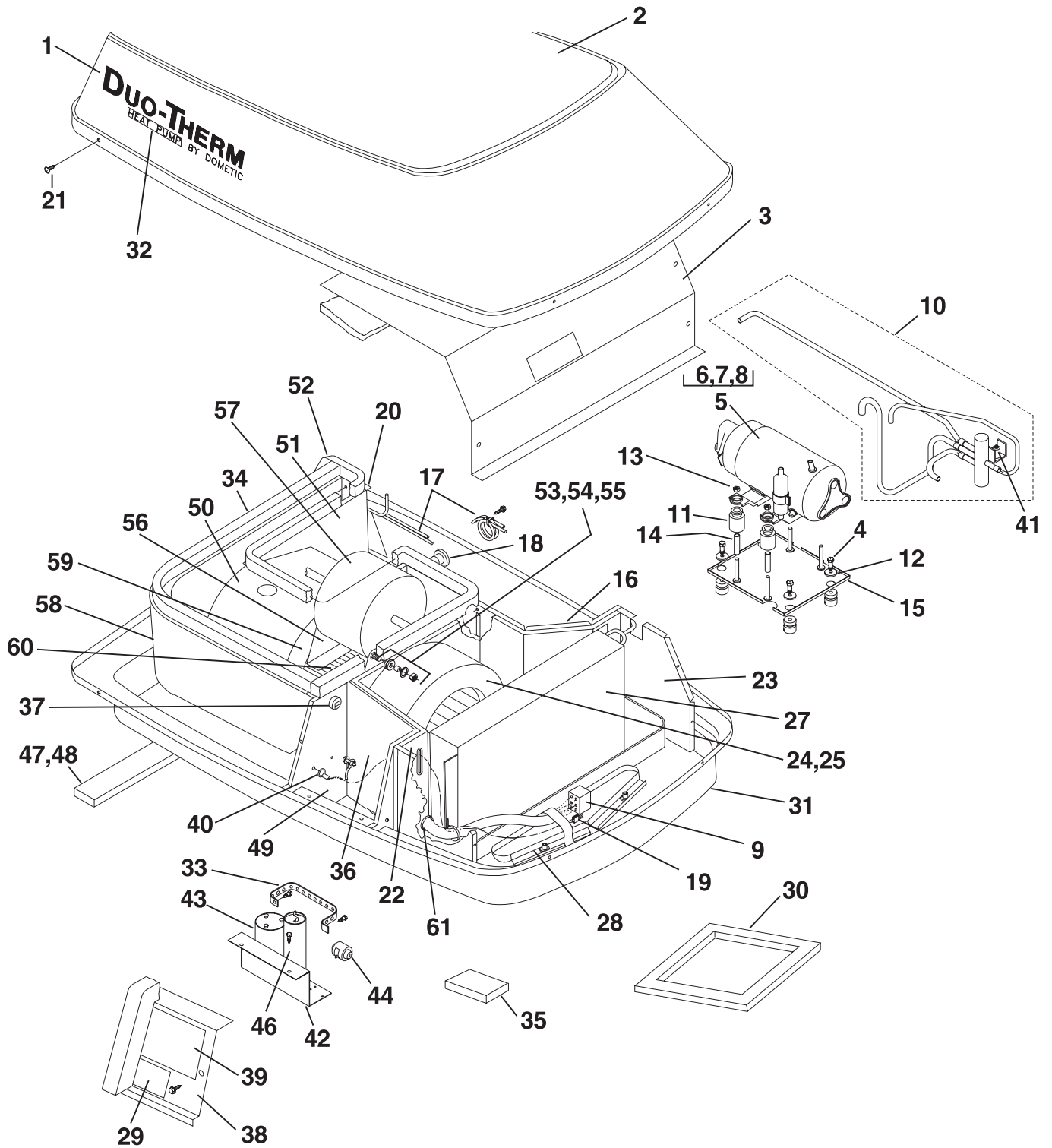
	Page	Index #
Customer Options .....	6	— —
Roof Mounted Assembly .....	5	1-61
Wiring Diagrams .....	7	— —

## SPECIFICATIONS

MODEL NO.	630035.321	
Nominal Capacity (BTU/HR)	Cooling=13,500/Heating=13,500	
Electrical Rating	115 VAC, 60 Hz., 1 ph.	
Compressor Rated Load Amps	12.4	
Fan Motor Rated Load Amps	3.1	
Compressor Locked Rotor Amps	60.0	
Fan Motor Locked Rotor Amps	8.8	
SCFM-High Speed Max./Min.	335/250	
Refrigerant (R22) Oz.	15.5	
Minimum Wire Size *	12 AWG Copper Up to 24 ft.	
Circuit Protection	20 Amp Time Delay Fuse or HACR Circuit Breaker	
Installed Weight (Pounds)	102	
Minimum Generator	1 Unit	3.5 KW
Size **	2 Units	5.0 KW

- \* For distances over 24 ft. consult the National Electrical Code.
- \*\* The Dometic Corporation gives **GENERAL** guidelines for generator requirements. These guidelines come from experiences people have had in actual applications. When sizing the generator, the total power usage of your recreational vehicle must be considered. Also keep in mind generators lose power at high altitudes and from lack of maintenance.

# ROOF MOUNTED ASSEMBLY



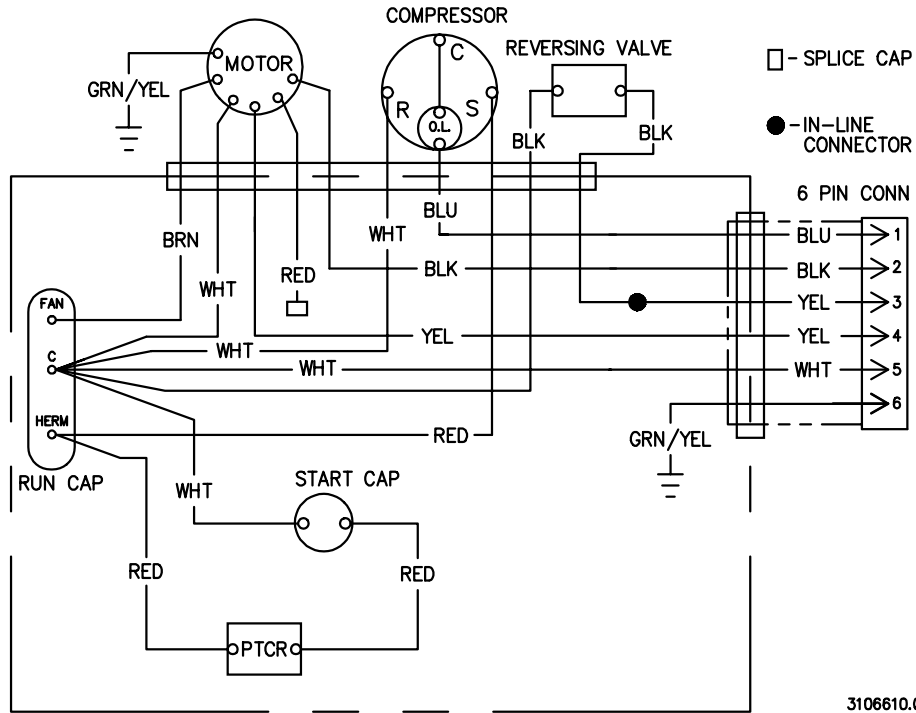
**ROOF-TOP HEAT PUMP MODEL 630035.321 C & D**

<b>Index #</b>	<b>Description</b>	<b>630035.321 C&amp;D</b>	
1	Decal, Duo-Therm (2 req.)	3102888.009	
2	Shroud, less decals	See NOTE 1	
3	Evap. cover asm. with insulation	3102514.803	
4	Screw, M25-20 x .75 hw (4 req.)	312110.024	
5	Compressor Asm.	3102984.006	
6	Cover, terminal	3102321.001	
7	Gasket, terminal	3102320.003	
8	Overload, protector	3100250.228	
9	Plug, conn. housing 6-pole	3106625.019	
10	Valve, Rev. Weldment	3106042.009	
11	Grommet mtg. plate (7 req.)	3102324.005	
12	Washer, flat (4 req.)	309513.015	
13	Nut, flange (3 req.)	306342.005	
14	Sleeve, compressor (3 req.)	3100239.114	
15	Plate, compressor mtg.	3102590.035	
16	Bulkhead, compressor	3102511.049	
17	Capillary tubes (2 req.)	3100245.392	
18	Bushing, snap-in	301028.037	
19	Sensor, ambient	3106483.021	
20	Plate, close-off	3106143.005	
21	Screw, shroud (4 req.)	313685.001	
22	Insulation, evap. bulkhead	3102516.022	
23	Plate, evap. close-off [Split and use (1) each side]	3102512.021	
24	Blower housing	3100300.007	
25	Wheel, evaporator (plastic)	3100385.008	
27	Coil, evaporator	3105970.002	
28	Bracket, front	3105495.000	
29	Decal, Caution	3100384.001	
30	Gasket, mounting 14 x 14	3100247.000	
31	Base pan	3101885.071	
32	Decal, Heat Pump (2 req.)	3106381.001	
33	Strap, capacitor	317188.000	
34	Foam tape 1-1/4" x 1-1/4 x 35	3102669.029	
35	Foam block (2 req.)	3100587.009	
36	Bulkhead, elec. box	3102532.037	
37	Relief, strain	302994.017	
38	Cover, elec. box	3102510.009	
39	Decal, field wiring	3106610.003	
40	Bushing, snap-in	301028.037	
41	Solenoid, reversing valve	3105504.009	
42	Panel, capacitor	3104412.006	
43	Capacitor, fan/run	3100248.321	
44	PTCR device	3100876.006	
45	Insulation, housing (not shown)	3100294.002	
46	Capacitor, start	3100236.169	
47	Gasket 10" x 1.5"	3100286.032	
48	Gasket 16" x 1.5" (not shown) (2 req.)	3100286.016	
49	Bulkhead, evaporator	3100254.055	
50	Blower scroll	3100260.003	
51	Blower, side/rear	3100261.001	
52	Foam tape, 1-1/4" x 3/4" x 69" (order by inches)	3102669.045	
53	Grommet, motor (4 req.)	3100230.022	
54	Spacer, motor (4 req.)	308046.000	
55	Nut, flange (4 req.)	306342.003	
56	Bracket, motor (2 req.)	3106187.002	
57	Motor, fan	3108702.372	
58	Coil, condenser	3106041.001	
59	Blower, side-front	3100259.005	
60	Wheel, blower condenser	3100274.004	
61	Strain relief	302994.017	
<b>NOTE 1:</b> Models ending in .321		Use 3102515.008	Shell White
Models ending in .321C		Use 3102515.024	Polar White
Models ending in .321D		Use 3102515.032	Light Gray

## CUSTOMER OPTIONS

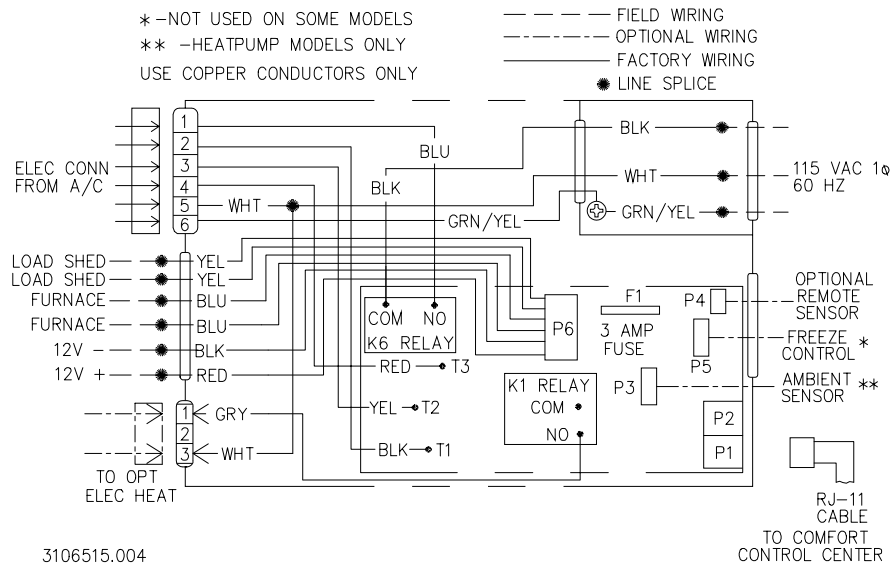
Description	Central Duct	Air Box
Comfort Control Center (1) Req. per A/C Unit	3106463.007	3106463.007
Electronic Control Kit	3106481.009	— — — —
Return Air Grill		
Shell White	3105007.003	— — — —
Polar White	3105007.011	— — — —
Gray	3105007.029	— — — —
Return Air Grill - Quick Cool		
Shell White	3105935.005	— — — —
Polar White	3105935.013	— — — —
Air Box		
Shell White	— — — —	3106575.008
Polar White	— — — —	3106575.016
Electric Heat Kit	3105164.002	3101121.030
Remote Sensor	3106486.008	3106486.008

### WIRING DIAGRAM ROOF MOUNTED ASSEMBLY



3106610.003

### WIRING DIAGRAM ELECTRONIC CONTROL KIT



3106515.004